

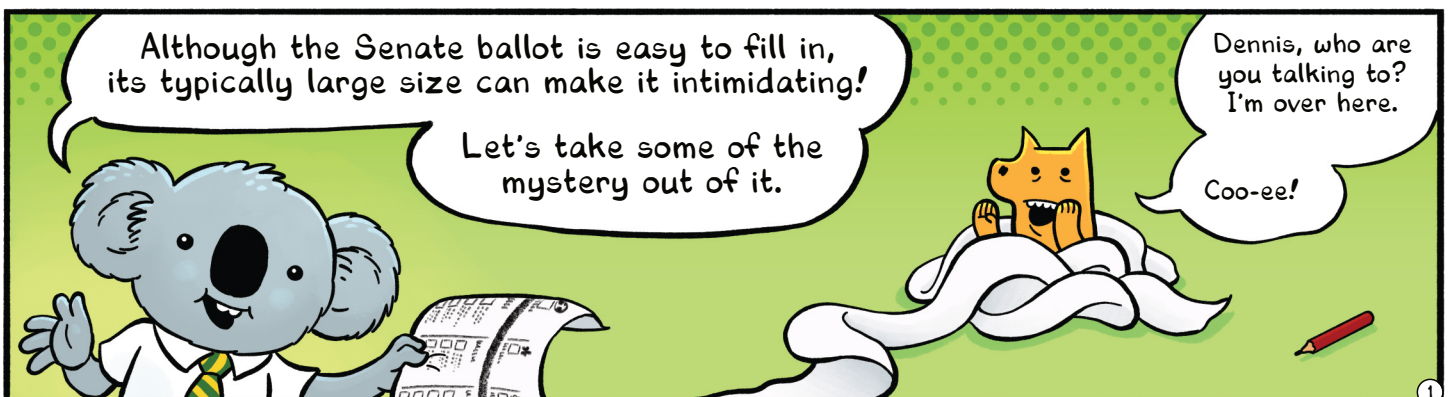
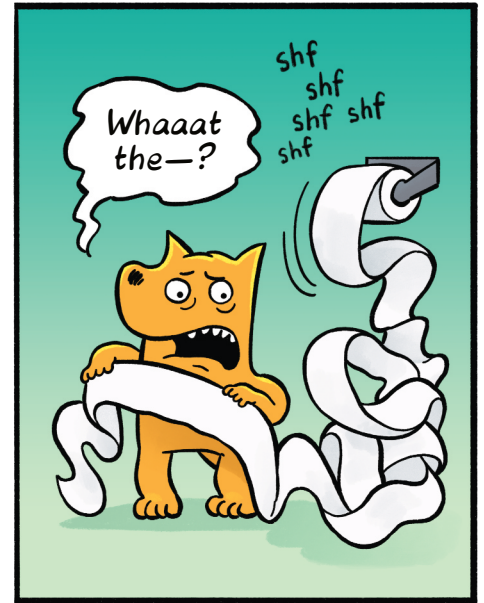
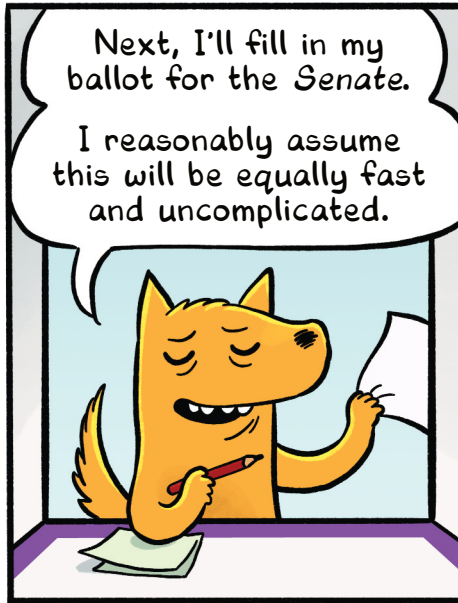
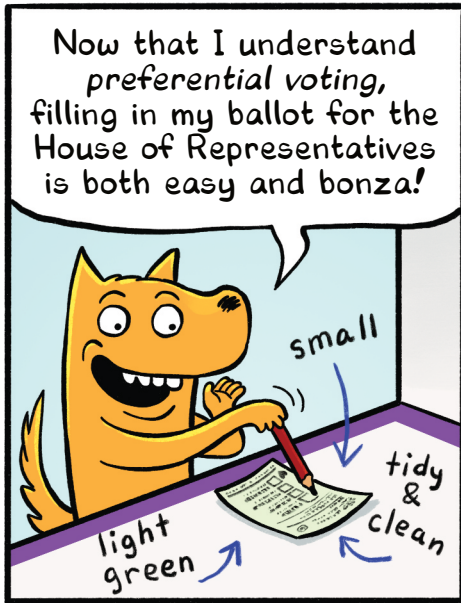
YOU CAN'T "WASTE" YOUR VOTE, PART 2:

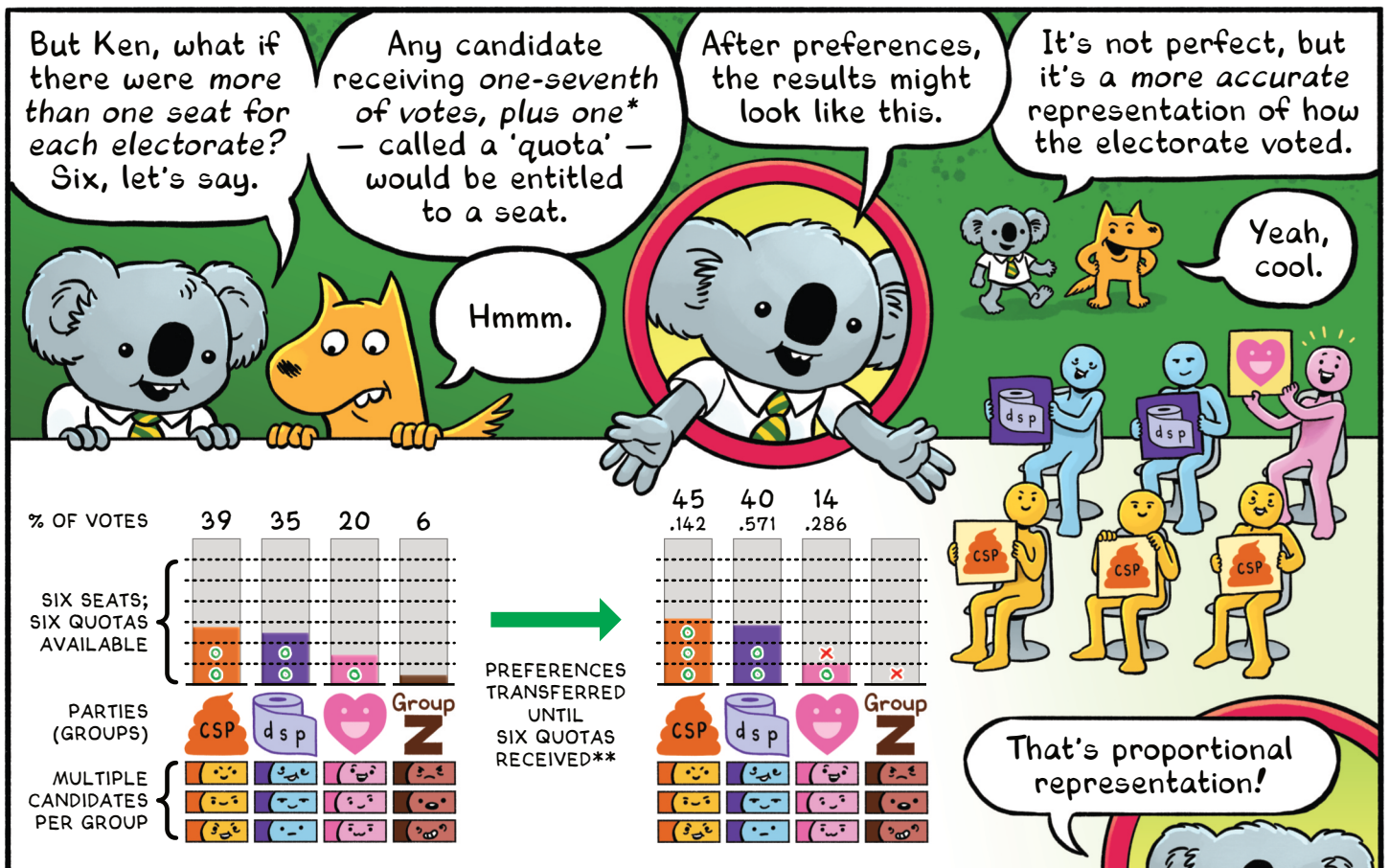
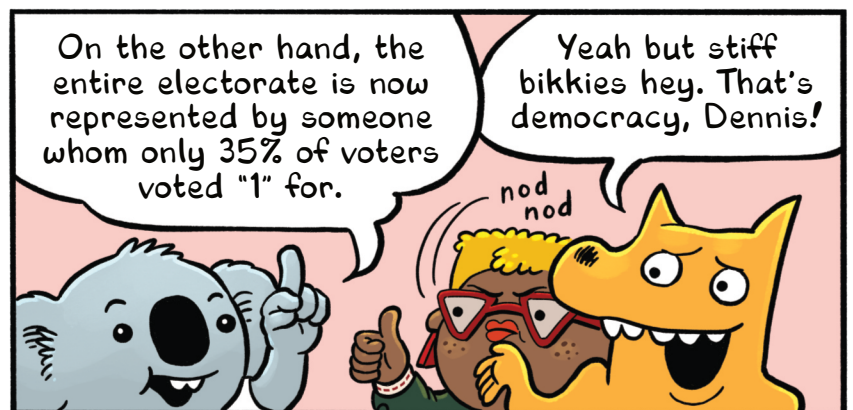
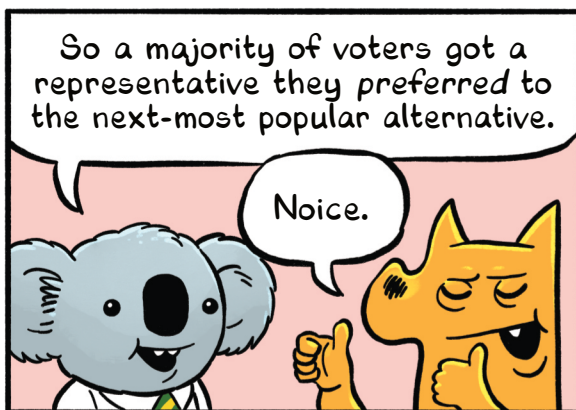
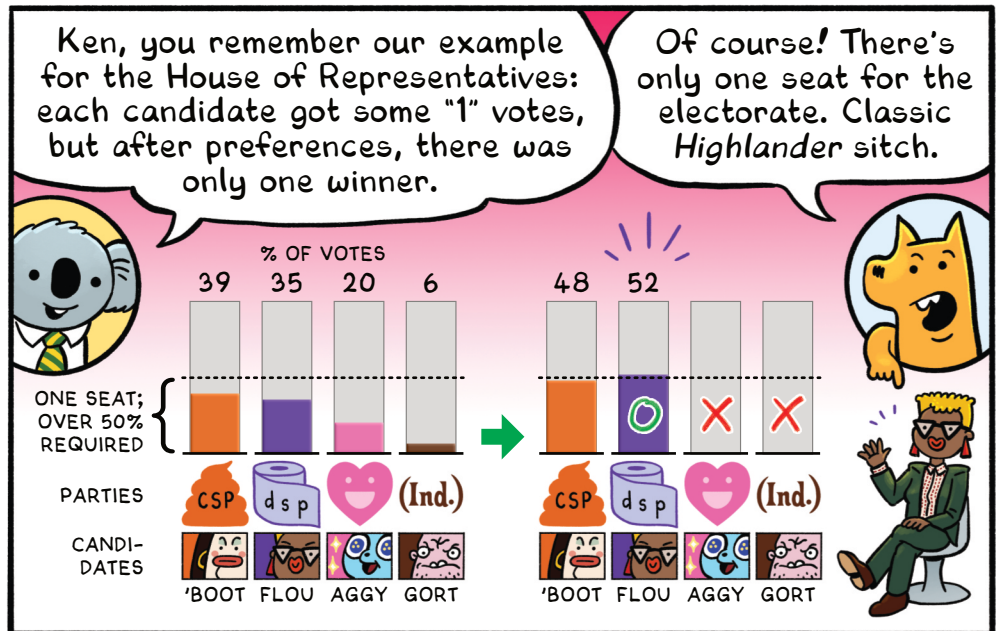
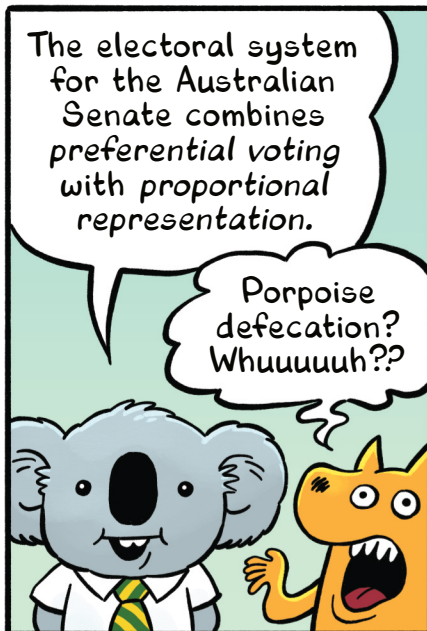


What's the Go Voting for the Senate?



How voting works in a federal election for the Senate ('Upper House')





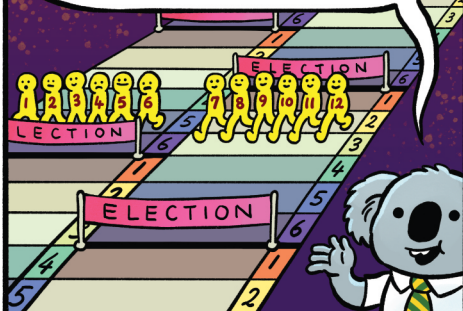
* This is the minimum value that ensures the maximum number of quotas is six. (In a way, a one-seat electorate, as in the House of Reps, has a 'quota' of one-half of votes, plus one.)

** Full details: www.aec.gov.au/voting/counting/senate_count.htm (April 2022)



In the Australian Senate, each electorate has twelve seats, and senators serve six-year terms.

But the terms are staggered, so we only vote for six senators at a time, every three years.*



* Except in the rare case of a 'double dissolution' and full senate election (which reduces the quota to one-thirteenth of votes plus one).

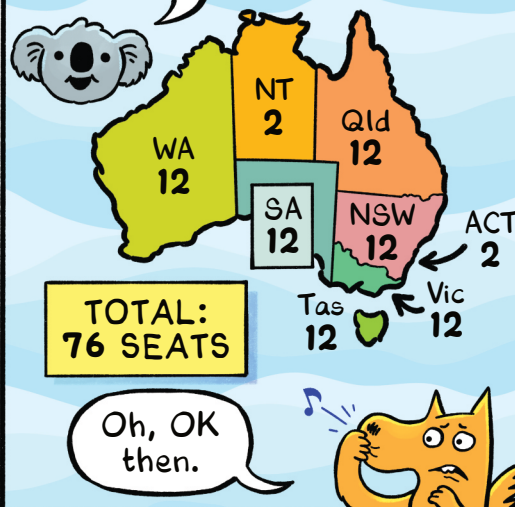
Hold on a tick! With so many seats per electorate, the Senate must have hundreds of members!



Wrong, Ken the Voting Dingo.



Unlike the House of Reps, the Senate's electorates are not local areas but entire states, plus the two major territories, which get two seats each.**

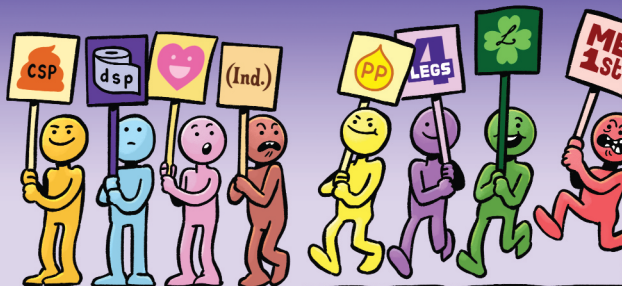


** Also shorter terms for senators. The quota is one-third of votes plus one.

Now, consider the following, Kenno my frenno!



1 Because senators are elected on a *quota* — far fewer votes than an absolute majority — minor party and independent candidates have a reasonable chance of winning. So a Senate ballot attracts more parties than a House of Reps ballot.

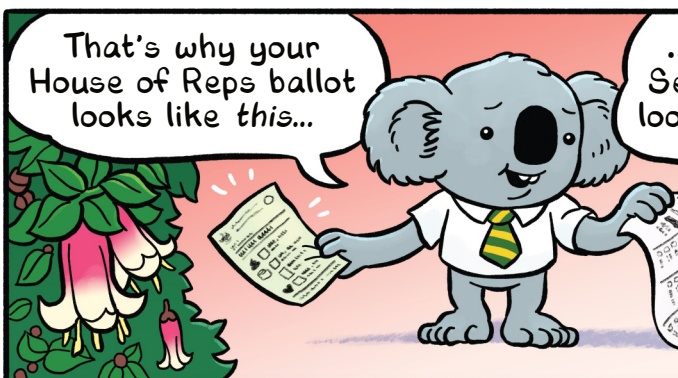


AND...

2 Because each electorate has multiple seats to be won, each party submits *multiple* candidates to potentially fill those seats.



That's why your House of Reps ballot looks like this...



...And your Senate ballot looks like this.

Sigh of resignation, Dennis!



Candidates are grouped vertically by party (and independents can form groups too), so if you only care which parties you're voting for, you should number *only* the boxes above the line.

You may vote in one of two ways

Above the line

Below the line

By numbering at least 12 of those located in the order of your choice (with number 1 as your first choice).

Oh, I get it. So if I want to rank candidates individually, I should number *only* the boxes below the line.

YOU MUST NUMBER AT LEAST 6 BOXES ABOVE THE LINE, OR AT LEAST 12 BOXES BELOW THE LINE. (DO NOT NUMBER BOXES BOTH ABOVE AND BELOW!)

Numbering groups above the line, like this...

...Is equivalent to following the given order of a group's candidates below the line, like this.

But if I favour some specific candidates, or if my preferences cross party groupings, I should stay below the line and make up my own order.

Just so!

SICK AS FINAL DEETS FOR LEGENDS



Den, I've heard that the counting process for Senate ballots is *complicated*.

It is! But you're not counting ballots, you're just voting. So don't worry about it!



Should I number *more* than 6 or 12 boxes?

If you *don't* number them all, there's a chance your ballot may be 'exhausted' before the final round of counting.



SHARE, COPY, DISTRIBUTE! VISIT...
chickennation.com/voting

PATRICK
ALEXANDER
© 2019-2022